

Flame detector SCU 1.1



GUANGZHOU SINON COMBUSTION

EQUIPMENT CO., LTD.

☎ 020-84581309

💻 020-84507159

🌐 www.gzsinon.net

✉ sinon@gzsinon.net

CHARACTERISTICS

- The flame detector SCU 1.1 is used for translating the flame detecting signal to dry contact signal and sending feedback to control system.
- UV detection, double-electrode detection and single-electrode detection are available.
- Minimum detectable current: 1 μ A.
- Dry contact feedback signals, divided into a normally open and a normally closed signal.
- The panel has an indicator, which lights when flame signal is detected.

APPLICATIONS

The flame detector is used for the conversion of ion detecting signal or UV detecting signal in automatic control system. The system controls the gas shut-off valve according to the flame signal feedback by the detector. The flame detector is commonly used for the combustion system where multiple burners controlled by one gas shut-off valve or manual ignition is used, such as the main burner flame detection in main-pilot burner combustion system.

SPECIFICATION

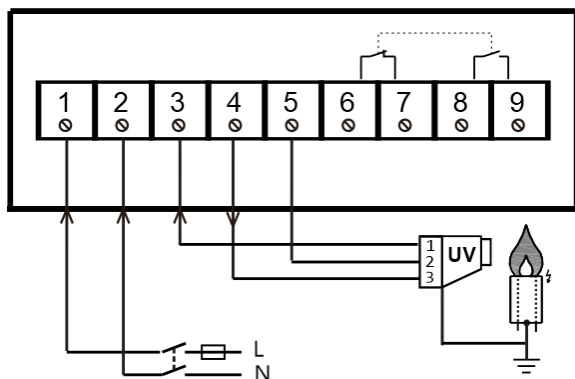
Technical data

- Power supply voltage: 220 V AC. Power consumption: 12 VA. Contact capacity: max. 2 A.
- Ambient temperature: -15~60 °C (5~140 °F). Enclosure: IP 40. Install away from heat sources.
- Minimum detectable current: 1 μ A.
- Ion detection shall be used with detecting electrode. UV detection shall be used with UV sensor.
Single-electrode detection shall be used with ignition transformer ordered separately, and the transformer is controlled by the system.

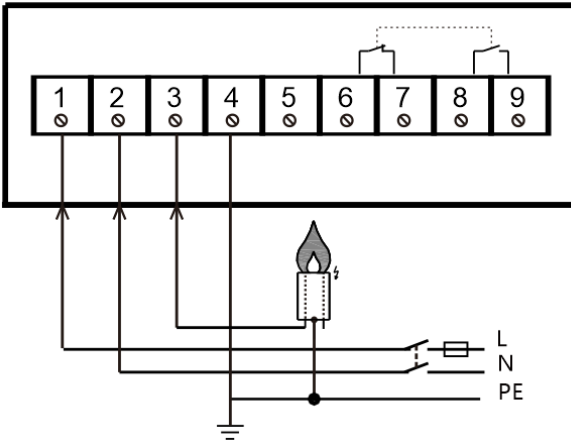
WIRING

SCU 1.1/220

UV detection



Ion detection (double-electrode flame detection)



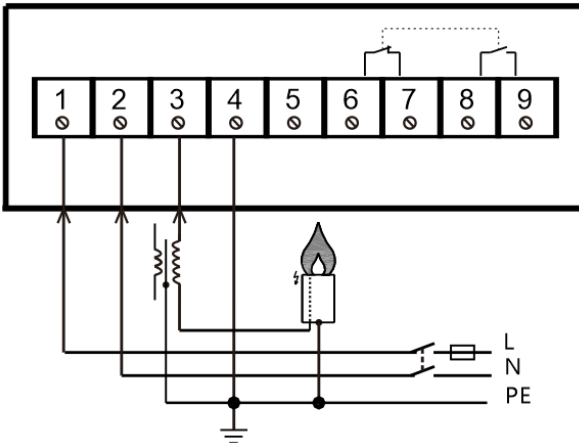
Signal indicator



Screw (connect the detector and its base)

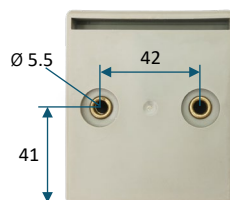
SCU 1.1S/220

Ion detection (single-electrode flame detection)



INSTALLATION

- Installing the flame detector with M5 screws to the base panel of control cabinet in facilities is recommended.
- Ground wire is necessary while using ion detection, the connection of ground wire must be reliable, and the ground wire of SCU 1.1 S/220 must be connected with burner reliably.



Unit: mm